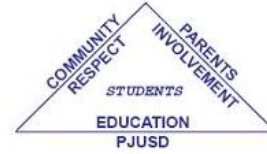


Pierce Joint Unified School District

P.O. Box 239 • Arbutle CA 95912 • (530) 476-2892 • Fax (530) 476-2289

Carol Geyer, Superintendent



ADDENDUM #2

PN 23-GI01 – Roof Replacement at Grand Island ES

October 6, 2023

TO ALL BIDDERS:

The following changes, omissions, and/or additions to the Proposal shall apply to proposals made for and to the execution of the various parts of the work affected thereby, and all other conditions shall remain the same.

All parties of interest shall take careful note of the addendum so that the proper allowances may be made in strict accordance with the Addendum.

Bidder shall acknowledge receipt of this addendum by signing and attaching this form to the Consultant Proposal. Failure to do so may subject Bidder to disqualification.

In case of conflict between bid documents and this addendum, this addendum shall govern.

PLAN & SPECIFICATION ADDS/CHANGES

- A. REVISED MATERIAL TAKEOFF – Brava Synthetic Roof Tile (For Reference Only)
- B. Provide GAF Fire-Resistant (Versa Shield) Membrane – Material Data Sheet Attached
- C. Provide Ice/Water Shield (Owens Corning – Weatherlock) – Material Data Sheet Attached
 - a. Installation of Versa Shield is required beneath all Brava Synthetic Roof Tiles for Class A Fire Rating.
 - b. Versa Shield product is in addition to the Owens Corning “Weatherlock” Underlayment Membrane

General Notes:

Clarification Questions: None

Please Note: Bidders who “no bid” items understand this is an “All or Nothing Bid.”

ALL BIDDERS MUST INCLUDE THE DISTRICTS CUPPCCA FORM WITH THEIR BID DOCUMENTS

Please confirm receipt of this addendum by date, signature this form and on bid proposal form. Contact the undersigned for any additional questions at e-mail address gparker@pjusd.com

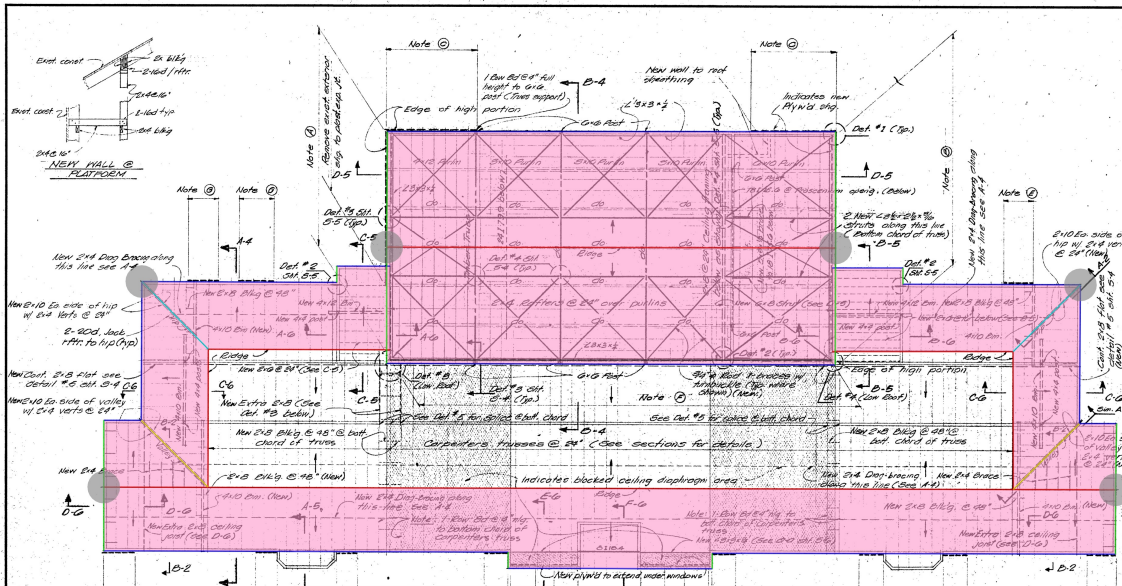
George Parker
Capital Projects Manager for Pierce Jt. USD

Company Name

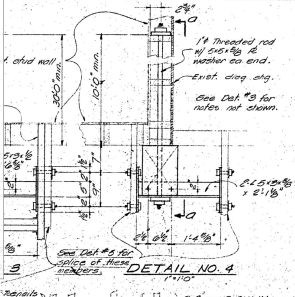
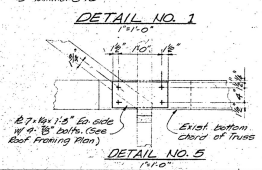
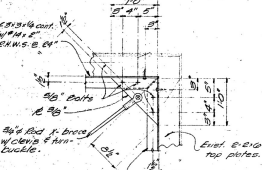
Signature

Date

Board of Trustees: John R. Friel • George Green • Melissa Doherty • Xochi Perez Dudley • Abel Gomez
President Vice-President Clerk Member Member



	6/12 Pitch	8041.9 SQ FT
	Eave	486.5 FT
	Ridge	370.4 FT
	Hip 6/12 Pitch	37.4 FT
	Valley 6/12 Pitch	37.1 FT
	Rake 6/12 Pitch	155.9 FT
	Bullnose	6.0 EA
	Headwall	78.1 FT



WALL SHEATHING NOTES

Note 1 Remove exist diag sheathing to Exposed on exterior. Remove interior wall finish. Apply 1/2\"/>

Note 2 Remove exist interior finish. Apply 1/2\"/>

Note 3 Remove exist diag sheathing. Apply 1/2\"/>

Note 4 Remove interior finish @ stage assembly & catwalks. Apply 1/2\"/>

Note 5 Install 1/2\"/>

CEILING DIAPHRAGM NOTES

1 Remove existing ceiling finish as required in New portion of building.

2 Install 1/2\"/>

3 Use drywall exterior elevations for extent of brick veneer to be replaced w/ proper anchorage and use plaster finish to be applied.

4 Install blocks and cross-bracing above ceiling in high portion of building.

5 Note to be 1/2\"/>

6 1/2\"/>

GENERAL NOTES

1 Remove all brick veneer except as noted on Architectural plans.

2 Apply wall sheat. as shown on Roof Framing Plan & details.

3 Use architect's exterior elevations for extent of brick veneer to be replaced w/ proper anchorage and use plaster finish to be applied.

4 See architect's plans for new interior ceiling and wall finishes where required by struct. and repair work.

5 All work should be taken not to check excessive amounts of material on the ceiling joists during rehabilitation.

6 Check all dimensions in the field before fabricating any materials.

GENERAL NOTES

LN = Joist Hanger
 TLG = Top-L-Anchor by Timber Eng'g Co.

Wood Hanger Schedule	LN	LN	LN	LN	LN	LN	LN	LN	LN
2x4	2x4	2x4	2x4	2x4	2x4	2x4	2x4	2x4	2x4
2x6	2x6	2x6	2x6	2x6	2x6	2x6	2x6	2x6	2x6
2x8	2x8	2x8	2x8	2x8	2x8	2x8	2x8	2x8	2x8
2x10	2x10	2x10	2x10	2x10	2x10	2x10	2x10	2x10	2x10
2x12	2x12	2x12	2x12	2x12	2x12	2x12	2x12	2x12	2x12
2x14	2x14	2x14	2x14	2x14	2x14	2x14	2x14	2x14	2x14
2x16	2x16	2x16	2x16	2x16	2x16	2x16	2x16	2x16	2x16
2x18	2x18	2x18	2x18	2x18	2x18	2x18	2x18	2x18	2x18
2x20	2x20	2x20	2x20	2x20	2x20	2x20	2x20	2x20	2x20
2x22	2x22	2x22	2x22	2x22	2x22	2x22	2x22	2x22	2x22
2x24	2x24	2x24	2x24	2x24	2x24	2x24	2x24	2x24	2x24
2x26	2x26	2x26	2x26	2x26	2x26	2x26	2x26	2x26	2x26
2x28	2x28	2x28	2x28	2x28	2x28	2x28	2x28	2x28	2x28
2x30	2x30	2x30	2x30	2x30	2x30	2x30	2x30	2x30	2x30
2x32	2x32	2x32	2x32	2x32	2x32	2x32	2x32	2x32	2x32
2x34	2x34	2x34	2x34	2x34	2x34	2x34	2x34	2x34	2x34
2x36	2x36	2x36	2x36	2x36	2x36	2x36	2x36	2x36	2x36
2x38	2x38	2x38	2x38	2x38	2x38	2x38	2x38	2x38	2x38
2x40	2x40	2x40	2x40	2x40	2x40	2x40	2x40	2x40	2x40
2x42	2x42	2x42	2x42	2x42	2x42	2x42	2x42	2x42	2x42
2x44	2x44	2x44	2x44	2x44	2x44	2x44	2x44	2x44	2x44
2x46	2x46	2x46	2x46	2x46	2x46	2x46	2x46	2x46	2x46
2x48	2x48	2x48	2x48	2x48	2x48	2x48	2x48	2x48	2x48
2x50	2x50	2x50	2x50	2x50	2x50	2x50	2x50	2x50	2x50
2x52	2x52	2x52	2x52	2x52	2x52	2x52	2x52	2x52	2x52
2x54	2x54	2x54	2x54	2x54	2x54	2x54	2x54	2x54	2x54
2x56	2x56	2x56	2x56	2x56	2x56	2x56	2x56	2x56	2x56
2x58	2x58	2x58	2x58	2x58	2x58	2x58	2x58	2x58	2x58
2x60	2x60	2x60	2x60	2x60	2x60	2x60	2x60	2x60	2x60
2x62	2x62	2x62	2x62	2x62	2x62	2x62	2x62	2x62	2x62
2x64	2x64	2x64	2x64	2x64	2x64	2x64	2x64	2x64	2x64
2x66	2x66	2x66	2x66	2x66	2x66	2x66	2x66	2x66	2x66
2x68	2x68	2x68	2x68	2x68	2x68	2x68	2x68	2x68	2x68
2x70	2x70	2x70	2x70	2x70	2x70	2x70	2x70	2x70	2x70
2x72	2x72	2x72	2x72	2x72	2x72	2x72	2x72	2x72	2x72
2x74	2x74	2x74	2x74	2x74	2x74	2x74	2x74	2x74	2x74
2x76	2x76	2x76	2x76	2x76	2x76	2x76	2x76	2x76	2x76
2x78	2x78	2x78	2x78	2x78	2x78	2x78	2x78	2x78	2x78
2x80	2x80	2x80	2x80	2x80	2x80	2x80	2x80	2x80	2x80
2x82	2x82	2x82	2x82	2x82	2x82	2x82	2x82	2x82	2x82
2x84	2x84	2x84	2x84	2x84	2x84	2x84	2x84	2x84	2x84
2x86	2x86	2x86	2x86	2x86	2x86	2x86	2x86	2x86	2x86
2x88	2x88	2x88	2x88	2x88	2x88	2x88	2x88	2x88	2x88
2x90	2x90	2x90	2x90	2x90	2x90	2x90	2x90	2x90	2x90
2x92	2x92	2x92	2x92	2x92	2x92	2x92	2x92	2x92	2x92
2x94	2x94	2x94	2x94	2x94	2x94	2x94	2x94	2x94	2x94
2x96	2x96	2x96	2x96	2x96	2x96	2x96	2x96	2x96	2x96
2x98	2x98	2x98	2x98	2x98	2x98	2x98	2x98	2x98	2x98
2x100	2x100	2x100	2x100	2x100	2x100	2x100	2x100	2x100	2x100

REHABILITATION OF
WILLIAM KOBLIK architect
 MEMBER OF AMERICAN INSTITUTE OF ARCHITECTS
 GRAND ISLAND SCHOOL
 PHASE II
 1000 GRAND ISLAND SCHOOL STREET
 COLLEA & YOUNG, COUNTIES - CALIFORNIA

APPROVED
 DATE: 11/10/10
 BY: WILLIAM KOBLIK

DATE: 11/10/10
 SHEET: 5 OF 9



Roof Material Takeoff Report – 002067

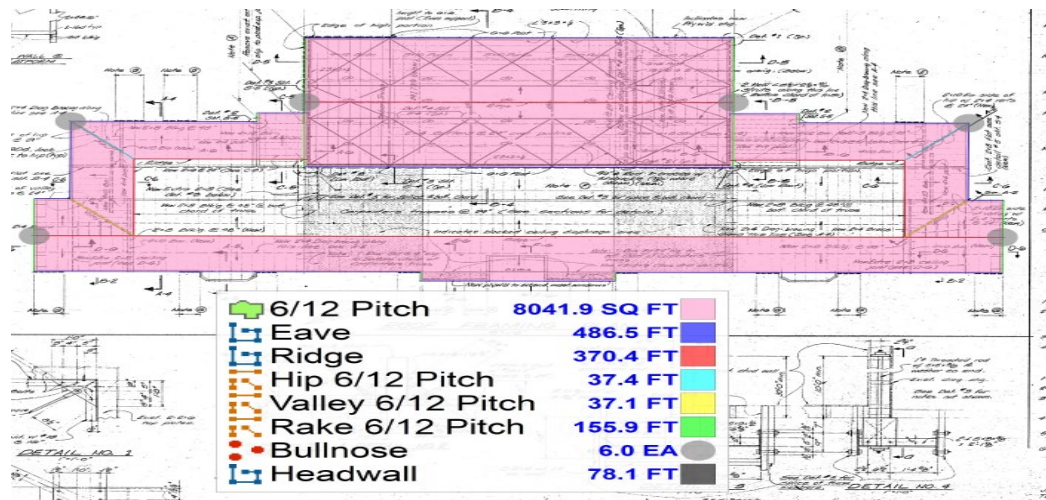
This material takeoff is provided as a free service by Brava Roof Tile. Please note that while we have made every effort to ensure the accuracy of this material estimate, we cannot guarantee that the amounts are absolutely correct. By using this estimate, you accept full responsibility for any decisions made based on the information provided.

Plans Date/Revision: 03/11/1968

Completed: 09/29/2023

Contact George Parker-Grand Island School Updated

Address Colusa County, CA



Summary Data	#SQ	80.4
	Eave(ft)	486.5
	Hip(ft)	37.4
	Ridge(ft)	370.4
	Valley(ft)	37.1
	Rake(ft)	155.9
	Bullnose	6
	Headwall(ft)	78.1

Remarks: There were no measurements provided to verify that the scale is correct. I was asked to use 6/12 pitch to complete this takeoff. Full sized legend is uploaded in SF.

For additional information:
 Please Contact Brava Technical Support - (844) 290-4196
 Email: technicalsupport@bravatile.com

Disclaimer of Liability
 Technical information contained herein is furnished without charge or obligation and is given and accepted at recipient's sole risk. Because conditions of use may vary and are beyond our control, Brava Roof Tile makes no representation about, and is not responsible or liable for the accuracy or reliability of data associated with particular uses of any product described herein.

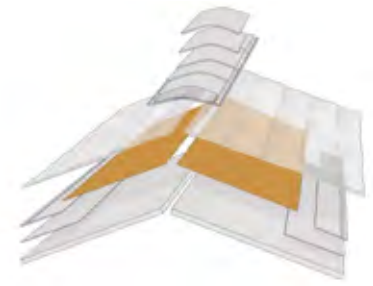
VersaShield[®] Fire-Resistant Roof Deck Protection

Help improve your roof system's fire resistance while protecting it from damaging moisture with fire-resistant roof deck protection



- Provides a UL Class A rating on most roof systems¹
- Helps protect against dangerous flame spread and penetration into the interior
- Provides a critical layer of extra protection between your roof covering and deck to resist wind-driven rain (or moisture from other sources) that can cause damage to your roof structure

VersaShield® Fire-Resistant Roof Deck Protection



Benefits:

- **Excellent protection** against fire spread and penetration
- **Helps upgrade the UL fire classification of almost any type of roof system**, including upgrading most metal roofs to a UL Class A rating¹
- **An efficient fire-resistant slip sheet** and roof deck protection all in one product
- **Fiberglass-reinforced** so it lies flatter for a better-looking finished roof
- **Slip-resistant walking surface** helps improve traction for installers
- **Light color** provides a cooler working surface (vs. conventional black felts)
- **Eligible for up to a Lifetime[†] limited warranty.** It's also an eligible accessory product in the Roof Deck Protection category of GAF residential enhanced warranties.

VersaShield® Fire-Resistant Roof Deck Protection physical/performance properties

Tensile		
MD	ASTM D146/D828	60 lb./in. width
CMD		30 lb./in. width
Tensile		
MD	ASTM D1922	400 grams
CMD		550 grams
Water vapor transmission		
Permeance	ASTM E96	3 perms minimum
Liquid water transmission test		
	ASTM D4896	Pass

VersaShield® Fire-Resistant Roof Deck Protection Class A rating layer requirements^{*1}

Roofing material	Roof type	Minimum thickness	15/32" plywood	Existing wood shake/shingle	Spaced sheathing
UL Listed Stone Coated Steel	Direct to deck shingle	0.013"	1 Layer	N/A	1 Layer
UL Classified or Listed Steel	Direct to deck shingle	0.013"	1 Layer + 30 Felt	N/A	1 Layer + 30 Felt
Any UL Classified or Listed Steel	Batten required shingle	0.013"	1 Layer	2 Layers	1 Layer
Any UL Classified or Listed Steel	Panel of standing seam	0.015"	1 Layer	N/A	1 Layer
Any UL Classified or Listed Copper	Panel of standing seam	0.016"	1 Layer	N/A	1 Layer
Any UL Classified or Listed Copper	Shingle	0.016"	1 Layer + 30 Felt	2 Layers	1 Layer + 30 Felt
Any UL Classified or Listed Aluminum	Panel or shingle	0.018"	2 Layers	N/A	N/A

*When installed in accordance with section 4.2.1 of GAF ESR-2053, VersaShield® can be used over existing wood shakes or shingles as an alternative of the covering materials specified in 1510.4 of the IBC, section R907.4 of the IRC, or section 1513.3 of Chapter 15 Appendix to the UBC.



To learn more about the Lifetime Roofing System visit gaf.com/Lifetime



Product Details:

Nominal Specifications:

For use with asphaltic shingles, metal, slate, wood, and most other roof systems.²

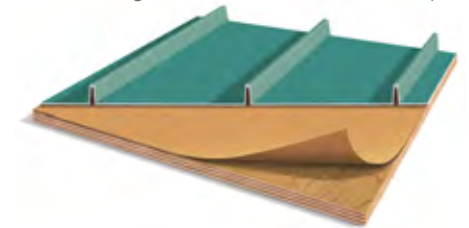
- **Roll size:** 3.5 squares (350 sq. ft. [32.5m²]) (excludes laps)
- **Roll width:** 42" (1.07 m)
- **Roll length:** 100' (30.48 m)
- **Approx. roll weight:** 53 lb. (24 kg)
- **UV exposure:** Resists UV degradation for up to 60 days³
- **Storage:** Do **NOT** double stack pallets. Always protect from moisture, sunlight, and extreme temperatures during storage.

Code Approvals and Standards:

- Meets or exceeds the physical requirements of ASTM D146, D226 Type II, D828, and D4869 Type IV, D6757 Type I or Type II
- Component of a UL Listed ANSI/UL 790 Class A system when used with UL Class A shingles. See UL Certifications Directory for ratings with other roof covering assemblies.¹
- ICC ESR-2053
- ICC AC-160
- Miami-Dade County Product Control approved
- State of Florida approved

Typical applications for combustible decks

Roof covering will determine actual assembly



¹ Lifetime refers to the length of warranty coverage provided and means as long as the original individual owner(s) of a single-family detached residence [or eligible second owner(s)] owns the property where the qualifying GAF products are installed. For other owners/structures, Lifetime coverage is not applicable. Lifetime coverage on shingles requires the use of GAF Lifetime Shingles only. See the *GAF Shingle & Accessory Limited Warranty* for complete coverage and restrictions. Visit gaf.com/LRS for qualifying GAF products. Lifetime coverage on shingles and accessories requires the use of any GAF Lifetime Shingle and at least 3 qualifying GAF Accessories. See the *GAF Roofing System Limited Warranty* for complete coverage and restrictions. For installations not eligible for the *GAF Roofing System Limited Warranty*, see the *GAF Shingle & Accessory Limited Warranty*. Visit gaf.com/LRS for qualifying GAF products.

² Always refer to Underwriters Laboratories Certifications Directory for actual roof system assemblies.

³ Contact GAF Technical Support at 1-800-766-3411 or visit gaf.com for acceptable non-asphaltic roofing systems and limited warranty coverage.

⁴ 60-day UV resistance refers to standardized testing conducted to ensure the product will not physically degrade when exposed to UV. It is NOT related to withstanding water, snow, or wind. While VersaShield® Fire-Resistant Roof Deck Protection is water resistant, it is NOT WATERPROOF. DO NOT USE VersaShield® Fire-Resistant Roof Deck Protection as a temporary roof to protect property or possessions.

We protect what matters most™





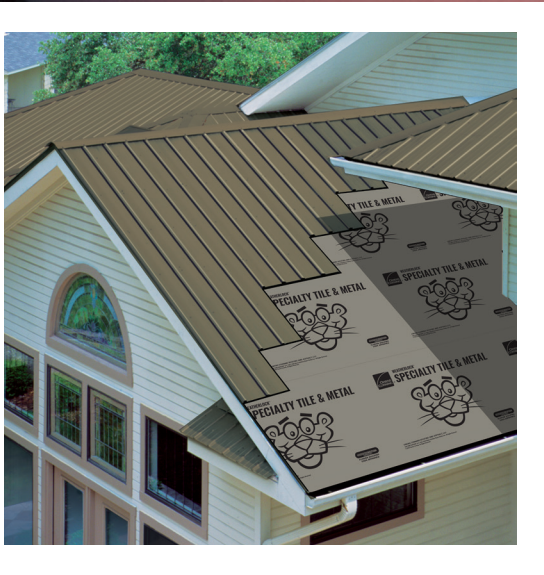
WEATHERLOCK[®] SPECIALTY TILE & METAL

Waterproofing Barrier



SEAL.

HELPS CREATE A
WATERPROOF BARRIER



TOTAL PROTECTION. TOTAL CONFIDENCE.[™]



SEAL.



DEFEND.



BREATHE.

WeatherLock® Specialty Tile & Metal underlayment provides waterproof protection under foam or mechanically fastened tile and metal roofing systems.

- **High Temp** - Designed to withstands temperatures up to 260°F without fusing or degrading overlying metal roofing.
- **Enhanced UV exposure** - Can be exposed to the elements up to 180 days.
- **Premium Protection** - Adheres to roof deck and seals around nails for dependable, water-tight construction.*
- **Safe installation** - Single-layer polyester walking surface provides a slip-resistant work area.
- **Durable surface** - excellent for foam adhesive set and mechanically fastened roof tile applications.



WeatherLock® Specialty Tile and Metal Waterproofing Barrier

CONSTRUCTION

Surface	Polyester non-woven fabric
Removable Backing	Split, silicone release poly

TYPICAL VALUES†

Property	2.14 sq. roll
Length	71.3 ft. (21.73 m)
Width	3 ft. (.91 m)
Area	214 sq. ft. (19.88m²)
Thickness	65 mils

APPLICABLE STANDARDS AND CODES

ASTM D1970
ASTM E108/UL 790 Class A Fire Resistance*
Florida Product Approval
PRI ER 1378E02
Miami-Dade County Product Approval§
Texas Department of Insurance Listed

PHYSICAL PROPERTIES

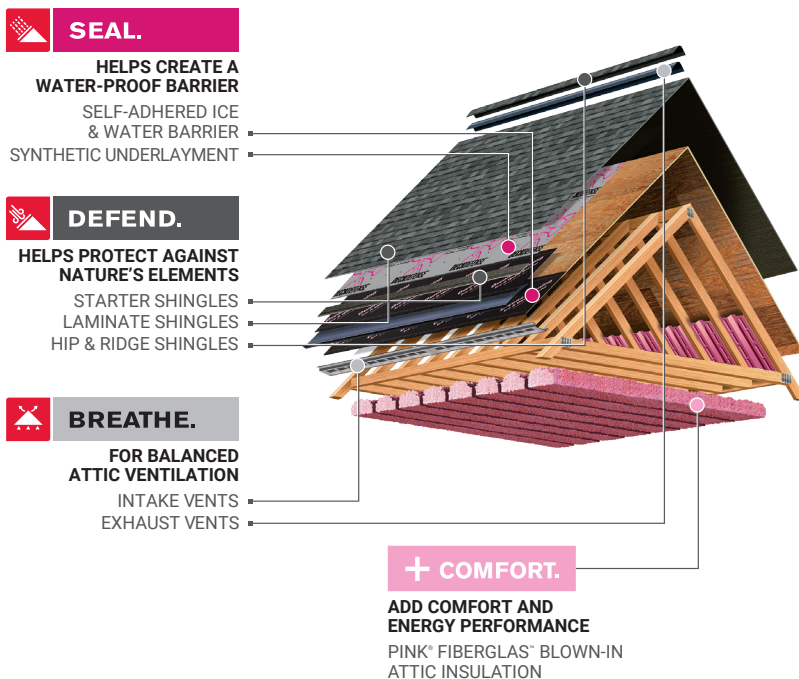
Property	Test Method
Slip Resistance	ASTM D1970
Tile Slippage Resistance	TAS 103
Elongation at Break (modified bitumen portion)	ASTM D2523

Property	Test Method
Pliability	1" Mandrel Bent at -20°F
Tensile Strength	ASTM D2523
Permeance	ASTM E96
Adhesion to Plywood, 40°F, 75°F	ASTM D1970/D903
Tear Resistance	ASTM D4037
Sealability around Nail	ASTM D1970
Low Temperature Flexibility	ASTM D1970
Waterproofing Integrity after Low Temperature Flex	ASTM D1970
Waterproofing Integrity of Lap	ASTM D1970
Thermal Stability	ASTM D1204/ASTM D1970
Puncture Resistance	TAS 103



TOTAL PROTECTION SIMPLIFIED™

It takes more than just shingles to protect a home. It takes an integrated system of components and layers designed to perform in three critical areas. The Owens Corning® Total Protection Roofing System® gives you the assurance that all of your Owens Corning® roofing components are working together to help increase the performance of your roof.



OWENS CORNING ROOFING AND ASPHALT, LLC
ONE OWENS CORNING PARKWAY
TOLEDO, OHIO, USA 43659

1-800-GET-PINK® | 1-800-438-7465
www.owenscorning.com

Pub. No. 10011679-E. Printed in U.S.A. June 2022.
THE PINK PANTHER® & © 1964–2022 Metro-Goldwyn-Mayer Studios Inc.
All Rights Reserved. The color PINK is a registered trademark of Owens Corning.
© 2022 Owens Corning. All Rights Reserved.

(Atlanta, Brookville, Denver, Jacksonville, Kearny, Medina, Portland, Savannah and Summit)

^ Excludes non-Owens Corning® roofing products such as flashing, fasteners, pipe boots and wood decking.
* See installation instructions for complete details, limitations and requirements.
** See actual warranty for complete details, limitations and requirements.
† All values are approximate.
§ Applies for all areas that recognize Miami-Dade County Product Control Section.
+ Class A Fire Resistance under concrete and clay tile and asphalt shingles. Class C Fire Resistance under metal panels and metal shingles.